



DuraTrack® HZ v3

RELIABILITY IS POWER.

167x

fewer components than competitive trackers

25,000+

Megawatt Years of Operation

ARRAY TECHNOLOGIES, INC.

3901 Midway Place NE
Albuquerque, NM 87109 USA

+1 505.881.7567
+1 855.TRACKPV (872.2578)
+1 505.881.7572

sales@arraytechinc.com

arraytechinc.com

THE MOST RELIABLE TRACKER UNDER THE SUN

HIGHEST POWER DENSITY.

Higher density means more power and more profit. DuraTrack HZ v3 offers the unique ability to maximize the power density of each site, boasting 6% more density than our closest competitor.

LEADING TERRAIN ADAPTABILITY.

Uneven terrain? Hill yes! Our flexibly linked architecture, with articulating driveline joints and forgiving tolerances, create the most adaptable system in market for following natural land contours and creates the greatest power generation potential from every site.

FEWER COMPONENTS. GREATER RELIABILITY.

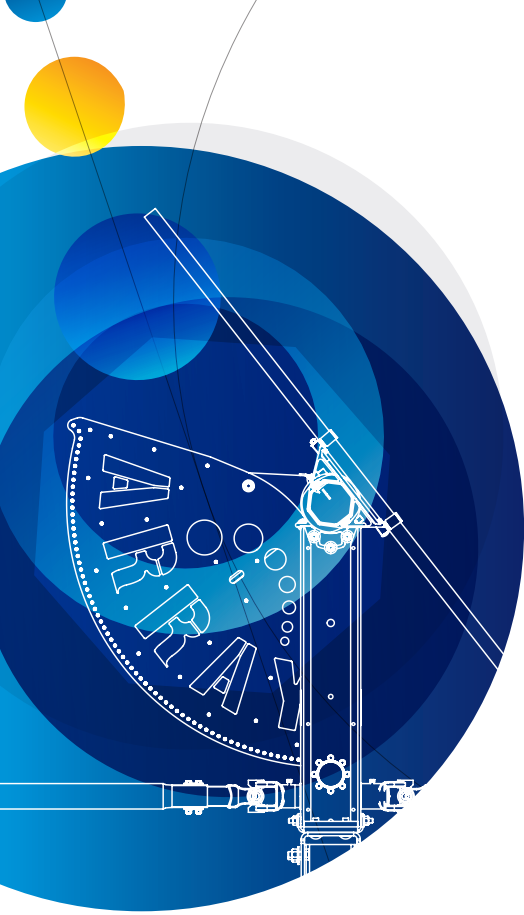
Less is more. Array was founded on a philosophy of engineered simplicity. Minimizing potential failure points (167 times fewer components than competitors), DuraTrack HZ v3 consistently delivers higher reliability and superior uptime.

FAILURE-FREE WIND DESIGN.

DuraTrack HZ v3 was designed and field tested to withstand some of the harshest conditions on the planet. It is the only tracker on the market that reliably handles wind events with a fully integrated, fully automatic wind-load mitigation system.

ZERO SCHEDULED MAINTENANCE.

Three decades of solar tracker system design, engineering and testing has resulted in uncompromising reliability. Maintenance-free motors and gears, fewer moving parts, and industrial-grade components means maintenance-free energy generation.



DuraTrack® HZ v3

COST VERSUS VALUE

We believe value is more than the cost of a tracking system. It's about building with forgiving tolerances and fewer parts so construction crews can work efficiently. It means protecting your investment with a failure-free wind management system. It also includes increasing power density. But most of all, value is measured in operational uptime, or reliability.

THE GLOBAL LEADER IN RELIABILITY

Array has spent decades designing and perfecting the most reliable tracker on the planet. Fewer moving parts, stronger components and intelligent design that protects your investment in the harshest weather are but a few of the innovative differences that keep your system running flawlessly all day and you resting easy at night.



STRUCTURAL & MECHANICAL FEATURES/SPECIFICATIONS

Tracking Type	Horizontal single axis
MW per Drive Motor	Up to 1.036800 MW DC using 360W crystalline
String Voltage	Up to 1,500V DC
Maximum Linked Rows	32
Maximum Row Size	90 modules crystalline, glass-on-glass, and bifacial; 240 modules First Solar 4; 72 modules First Solar 6
Drive Type	Rotating gear drive
Motor Type	2 HP, 3 PH, 480V AC
Motors per 1 MW DC	Less than 1
East-West / North-South Dimensions	Site / module specific
Array Height	54" standard, adjustable (48" min height above grade)
Ground Coverage Ratio (GCR)	Flexible, 28–45% typical, others supported on request
Terrain Flexibility	N-S tolerance: 0° - 8.5° standard, 15° optional Driveline: 40° in all directions
Modules Supported	Most commercially available, including frameless crystalline, thin film, and bifacial
Tracking Range of Motion	± 52° standard, ± 62° optional
Operating Temperature Range	-30°F to 140°F (-34°C to 55°C)
Module Configuration	Single-in-portrait standard, including bifacial. Two-or-three in landscape (framed or frameless), four-in-landscape (thin film) also available.
Module Attachment	Single fastener, high-speed mounting clamps with integrated grounding. Traditional rails for crystalline in landscape, custom racking for thin film and frameless crystalline and bifacial per manufacturer specs.
Materials	HDG steel and aluminum structural members
Allowable Wind Load (IBC 2012)	135 mph, 3-second gust exposure C
Wind Protection	Passive mechanical system relieves wind and obstruction damage — no power required

ELECTRONIC CONTROLLER FEATURES/SPECIFICATIONS

Solar Tracking Method	Algorithm with GPS input
Control Electronics	MCU plus Central Controller
Data Feed	MODBUS over Ethernet to SCADA system
Night-time Stow	Yes
Tracking Accuracy	± 2° standard, field adjustable
Backtracking	Yes

INSTALLATION, OPERATION & MAINTENANCE

PE Stamped Structural Calculations & Drawings	Yes
On-site Training & System Commissioning	Yes
Connection Type	Fully bolted connections, no welding
In-field Fabrication Required	No
Dry Slide Bearings & Articulating Driveline Connections	No lubrication required
Scheduled Maintenance	None required
Module Cleaning Compatibility	Robotic, Tractor, Manual

GENERAL

Annual Power Consumption (kWh per 1 MW)	400 kWh per MW per year, estimated
Land Area Required per 1 MW	Approx. 4 to 4.5 acres per MW @ 33% GCR (site and design specific)
Energy Gain vs. Fixed-Tilt	Up to 25%, site specific
Warranty	10 year structural, 5 year drive & control components
Patent Numbers	US patent 8,459,249 US patent 9,281,778 US patent 9,581,678 B2 and patents pending
Codes and Standards	UL Certified (3703 & 2703); IEC 62817